



Ex-i Flow Measurement Ltd

DESIGNERS OF FLOW MEASUREMENT
EQUIPMENT FOR THE OIL AND GAS INDUSTRY



INTRODUCTION

Exi Flow Measurement specialise in products for the gas and liquid measurement industry - manufacturing, researching and developing with a focus on continuous product development and enhancement.



Our commitment to clients is to provide products and a level of service that matches or exceeds their requirements in terms of performance, quality, reliability, cost and response.

For the first two years of its existence, Exi Flow Measurement

focused on the development of the SFC3000 Flow Computer which went from concept to finished product in less than two years.

Latterly the focus has altered slightly to development of new products and to manufacturing facilities and approvals.

MANUFACTURING CAPABILITIES

Exi Flow Measurement's SFC3000 Flow Computer was developed using the latest manufacturing techniques to offer a flexible and customer-oriented capacity whilst maintaining high levels of quality. Developed during 2007 and 2008 using state of the art components and design methods, it has an expected product design lifetime of product design lifetime of at least 10years, and Exi Flow Measurement guarantee that the product, or a direct equivalent, will be available until at least 2017 with technical support and service for a further 5 years beyond that date.

Individual electronic circuit boards and assemblies are handled as completed components and are fully tested and programmed prior to storage.

This approach allows a unit to be assembled, tested and packed in less than three hours and means that spare parts are usually available from stock.

We normally keep sufficient components to manufacture 50 machines at any one time and our recent expansion has given us the capacity for at least 75 SFC3000 Flow Computers per month. In 2011, more than 400 units were manufactured, tested and delivered to our clients.



ABOUT US

Exi Flow Measurement is based in Ford near to Arundel in West Sussex on the south coast of the UK. Recent expansion into our new building has provided us with state-of-the-art facilities for developing electronic, mechanical and software products and customer training, along with a custom-furnished facility for manufacturing our range of electronic products for the measurement industry.



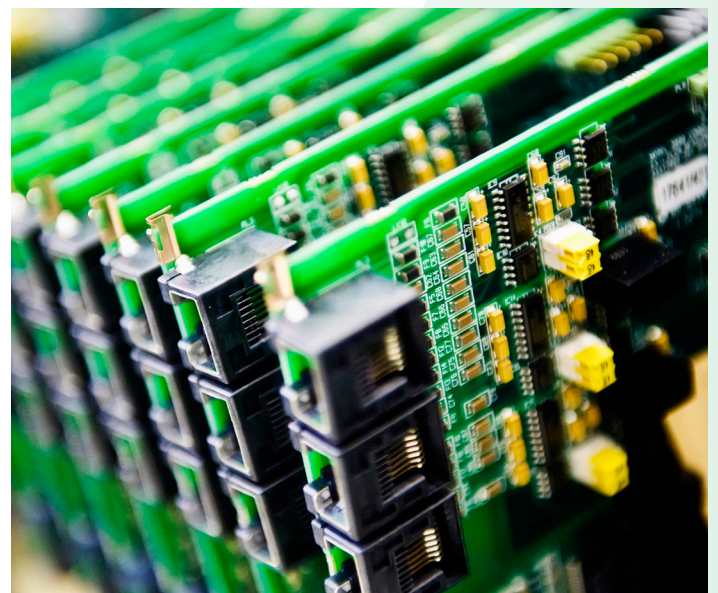
QUALITY

Our quality management approval by BSI to ISO9001:2008 covers all areas of the company's operation, specifically the fields of product development and product manufacturing. Specific reporting methods and documentation have been jointly developed with certain clients to supply them with the necessary reports and quality assurance documentation to cover the goods and services supplied.

Customer feedback and satisfaction forms a part of our quality system and are monitored by management through regular contacts with customers on both a commercial and technical level which are documented as part of the quality system. A register of approved sub-contractors and sub-suppliers is kept,

together with all contact details and approvals that they hold. This register records their performance levels and any audits that are undertaken.

The quality system is subject to quarterly management audits, an annual internal audit as well as annual management and external reviews by a third party. Key performance indicators for all aspects of the quality management system, including customer feedback, staff training, results of internal and external audits and reviews, are continuously evaluated by company management with the results being used to identify areas for improvements to the overall quality of the products and services offered by Exi Flow Measurement.





Ex~i Flow Measurement Ltd

Unit 22, Ford Lane Business Park,
Ford Lane, Ford, West Sussex,
BN18 0UZ, UK

tel: +44 (0) 1243 554920

fax: +44 (0) 1243 555284

e-mail: mail@exiflowmeasurement.co.uk

web: www.exiflowmeasurement.co.uk

The contents of this publication are presented for information purposes only. Whilst every effort has been made to ensure their accuracy they are not to be construed as warranties or guarantees, express or implied, regarding the products or services described or in their use. All sales are covered by Ex~i Flow Measurement Ltd's standard Terms and Conditions which are available if requested. Ex~i Flow Measurement Ltd reserves the right to change, modify or alter the design and specification at any time.



ISO 9001 :2008 FM 552113